

Puffer Paracolpo

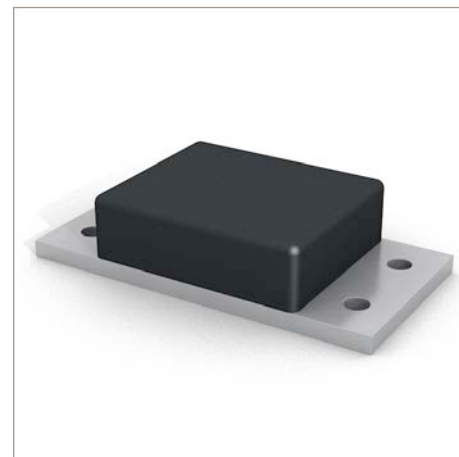
PARACOLPI AN

Continental[®]**Proprietà**

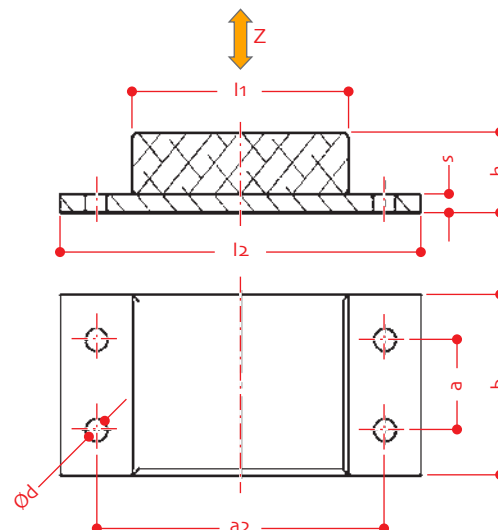
- puffer di fine corsa per la limitazione dei movimenti e l'assorbimento degli urti adatti per un elevato assorbimento di energia con smorzamento ridotto
- possono essere sollecitate a compressione e a taglio

Applicazioni

- attenuazione e ammortamento di urti di grave entità fra elementi in movimento sulle macchine

**Codice - C2BP...****Materiale - Gomma/Metallo****Durezza - 55 ° shore A**

FORMA	b	h	l ₂	s	l ₁	ø d	a ₂	a
	mm	mm	mm	mm	mm	mm	mm	mm
25081b	50	35	130	5	70	8,5	100	-
25080	50	70	130	5	70	8,5	100	-
20299	100	45	200	10	120	13	160	50
24472	100	80	200	10	120	13	160	50
21422b	120	45	250	10	150	15	200	60
21422	120	70	250	10	150	15	200	60
21055b	150	50	300	15	200	17	250	80
21055	150	80	300	15	200	17	250	80



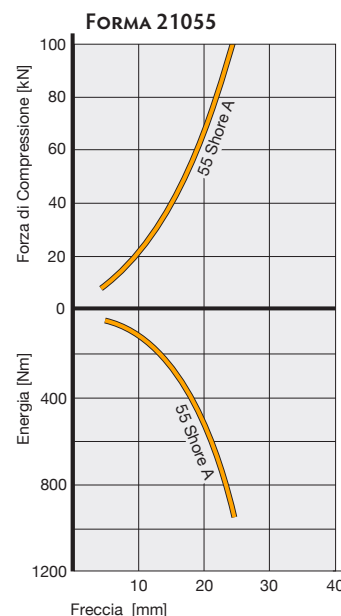
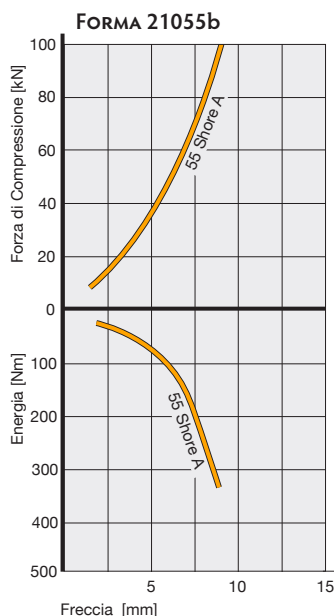
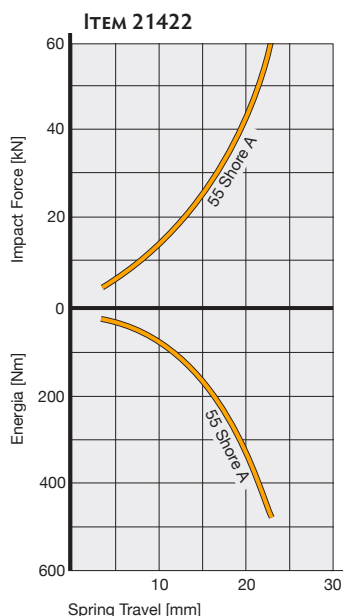
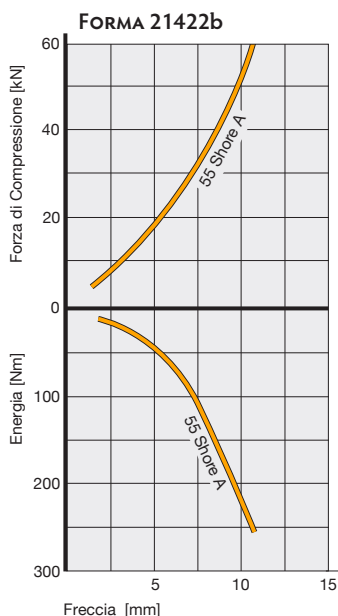
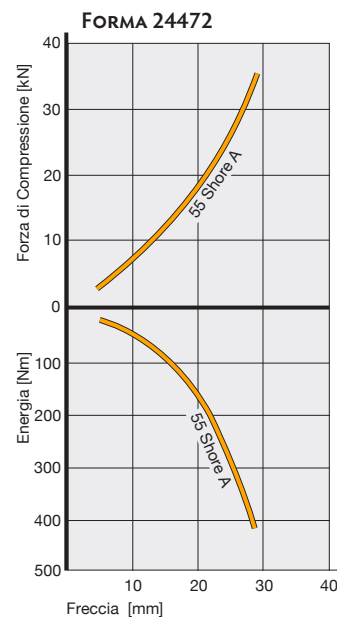
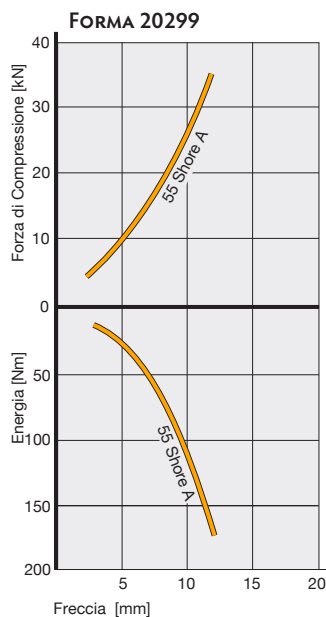
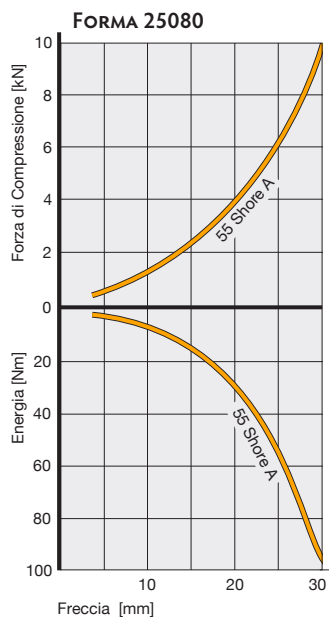
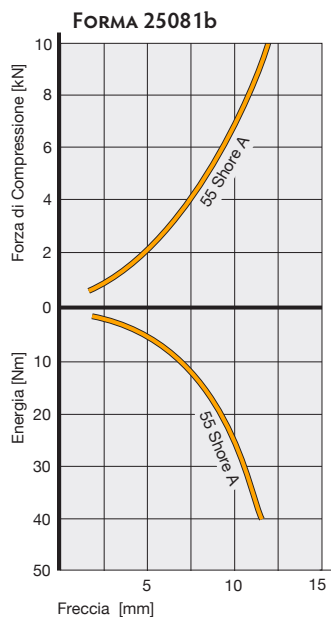
segue pagina successiva

Puffer Paracolpo

PARACOLPI AN



Diagramma delle prestazioni



ATAG si riserva il diritto di applicare modifiche senza preavviso, in virtù di eventuali migliorie qualitative e/o tecniche del prodotto - apr_20 rbd